

Hemsec Carrier

80mm to 200mm insulated wall and roof panels.

For use with external rainscreens, standing seams and single-ply membranes.



Rev: 0319-A
Pg: 1 / 3

PANEL DATA

Cover width:

1155mm

Panel Thickness (mm)	Min. Panel Length (m)	Thermal Transmittance U (W/M ² K) *	Weight Kg/m ² (0.7/0.5)
80	2.0	0.25	12.50
100	2.0	0.20	13.10
125	2.0	0.16	14.00
150	2.0	0.13	14.90
175	2.0	0.11	15.90
200	2.0	0.10	17.20

* Thermal transmittance based on a mean thermal conductivity value of 0.02038 W/mK.

SPAN INFORMATION

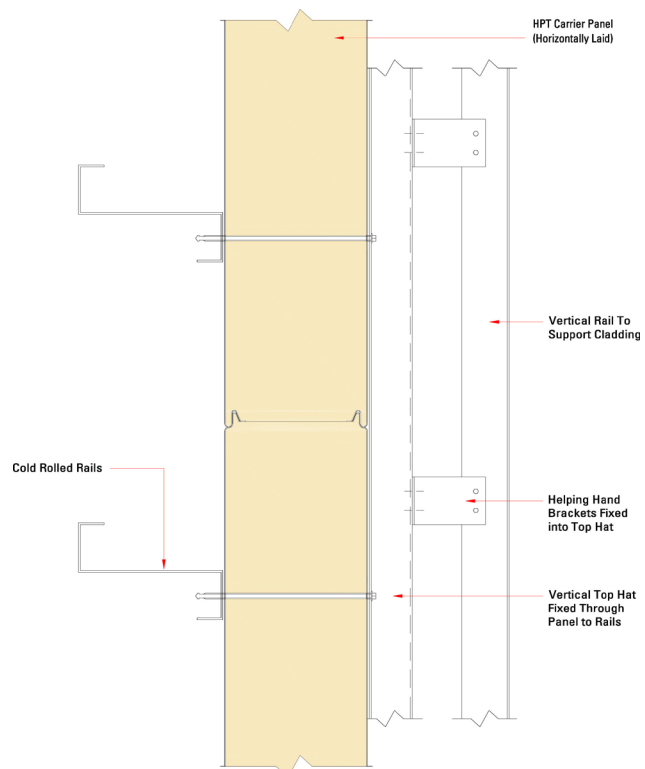
Span capabilities for Hemsec Carrier panels are determined on a project by project basis and require specific site data to be checked by a qualified structural engineer. Please contact Hemsec during the early stages of the projects design phase to make the most of the panels capabilities.

FIXING OF RAINSCREENS

All designs should be qualified by a third-party structural engineer who can then determine the appropriate arrangement of tophats and their fixings, Hemsec can provide the names of such structural engineers upon request.

Ideally the preferred solution is to fix vertically laid tophats to the panel face with through fixings into rails behind as shown on the detail, helping hand brackets are then fixed to the tophat, this approach eliminates any localised forces from the bracket into the outer skin of the panel.

If cladding rails are not available, then it may be possible to fix the vertical tophats into the outer skin of the panel with special fixings, it is advisable to keep the tophats in a vertical orientation on all applications as this reduces the loads in the fixings considerably compared with tophats laid horizontally.



INSULATION CORE

PIR Polyisocyanurate closed cell insulation HCFC free zero ODP rated core.

PANEL JOINT

Tongue and groove joint achieves excellent vapour resistance, enhancing thermal performance.

Hemsec Carrier

80mm to 200mm insulated wall and roof panels.

For use with external rainscreens, standing seams and single-ply membranes.



Rev: 0319-A
Pg: 2 / 3

AIR LEAKAGE

Panel joint air-tightness = 0.01 m³/m²/hr at 50 Pa when tested to EN 12114 in accordance with BS EN 14509: 2013.

MATERIALS - STEEL

Panel Finishes	Manufacturer	Internal Steel Face	External Steel Face	Steel Substrate (nominal Thk)	Paint Thickness μm (minimum)	Laminate Thickness μm	Plastisol Thickness μm
Polyester	Various		✓	0.7mm S280 / Z275 HDG	25	-	-
Polyester	Various	✓		0.5mm Z225 HDG	25	-	-
Primer / BWL	Various	✓		0.5mm Z225 HDG	7	-	-

Facing Profile Options:

External: • Smooth (as standard) Internal: • 100 Rib • Smooth

FIRE

Reaction to fire:

Polyester coated PIR sandwich panels have a performance in accordance with EN13501-1:2007 + A1:2009 of B s2 d0.

For reaction to fire on other panel finishes please contact Hemsec.

Resistance to fire:

LPS 1181 - Part 1 (Certificate 558b). Carrier Wall thicknesses 100-175mm achieve EXT-A30 with 60 minutes integrity and 30 minutes insulation. For more information visit www.redbooklive.com

Please refer to the Hemsec 'Fire Rating Matrix' document for further detail, available to download from our website.

ACOUSTICS

All panels have a predicted figure weighted sound reduction $R_w = 26\text{dB}$.

QUALITY & DURABILITY

Hemsec metal faced panels are manufactured from high quality materials, using state of the art production equipment to rigorous quality control standards (complying with an approved BS EN ISO 9001:20015 QMS standard) ensuring long-term durability and service life.

GUARANTEE

Hemsec Manufacturing Ltd offers a 25 year panel performance guarantee.

This is subject to project specific information. Please contact Hemsec for further details.

Hemsec Carrier

80mm to 200mm insulated wall and roof panels.

For use with external rainscreens, standing seams and single-ply membranes.



Rev: 0319-A
Pg: 3 / 3

PACKAGING

Hemsec metal faced composite insulated panels are stacked horizontally with protective jiffy foam laid between the ends of each panel; they are then wrapped in polythene and strapped on top of a 3mm hardboard sheet to prevent forklift damage and to protect against the weather. The pack is supported by a number of polystyrene bearers, (150mm x 100mm), regularly spaced under the hardboard to keep the panels elevated from the floor avoiding dirt and possible damage.

The number of panels in each pack depends on panel length and weight. Typical pack height is 1100mm.

Panel Thickness	80mm	100mm	125mm	150mm	175mm	200mm
No. panels/pack (max)	10	9	7	6	5	4

Maximum pack weight is 1000kg. Each pack is labeled with project information and customer panel references.

DELIVERY & SITE PROCEDURES

All deliveries are made by road transport to the project site, subsequent offloading and storage is the responsibility of the customer. Please refer to the Hemsec 'Panel Care Instructions' document for further detail, available to download from our website.

Indicative drawing details are available on request from Hemsec.